

# Powerline Press

## NEWSLETTER



Photo Credit: Laurie Hancock, Shady Lane Farm

A Supplement of Oklahoma Living Published by Lake Region Electric Cooperative for its members.

AUGUST 2020

## Local Students Awarded Scholarship

Every year Lake Region Electric Cooperative selects three local juniors to attend the Oklahoma Youth Tour trip to Washington D.C. The increased concerns about COVID-19 prompted the National Rural Electric Cooperative Association (NRECA) to cancel this year's trip, which was scheduled for June 2020.

In March, LREC had selected Ryly Ziese, a junior at Sequoyah High School, Colin Graham, and Alyssa Windhorst, both juniors at Coweta High School, to represent LREC during the tour of historical sites in Washington, D.C. The students submitted an essay at the local school level and then were selected to advance on to an interview competition that was held in March at the LREC headquarters in Hulbert. The top three were then chosen for the all-expense-paid trip to Washington, D.C.

With the cancellation of this year's tour, LREC awarded the Youth Tour recipients a \$2,000 scholarship.



Left to right: Juanita Keener, Youth Tour Coordinator, Ryly Ziese of Sequoyah High School, Alyssa Windhorst and Colin Graham both of Coweta High School.

"This is no comparison to the Youth Tour trip, and we are just as hurt that we are unable to conduct this year's trip for these deserving students. We hope the students can apply this money to continue their education. These students are some bright kids," said Juanita Keener, Youth Tour Coordinator.



## Seal air leaks from outlets and light switches.

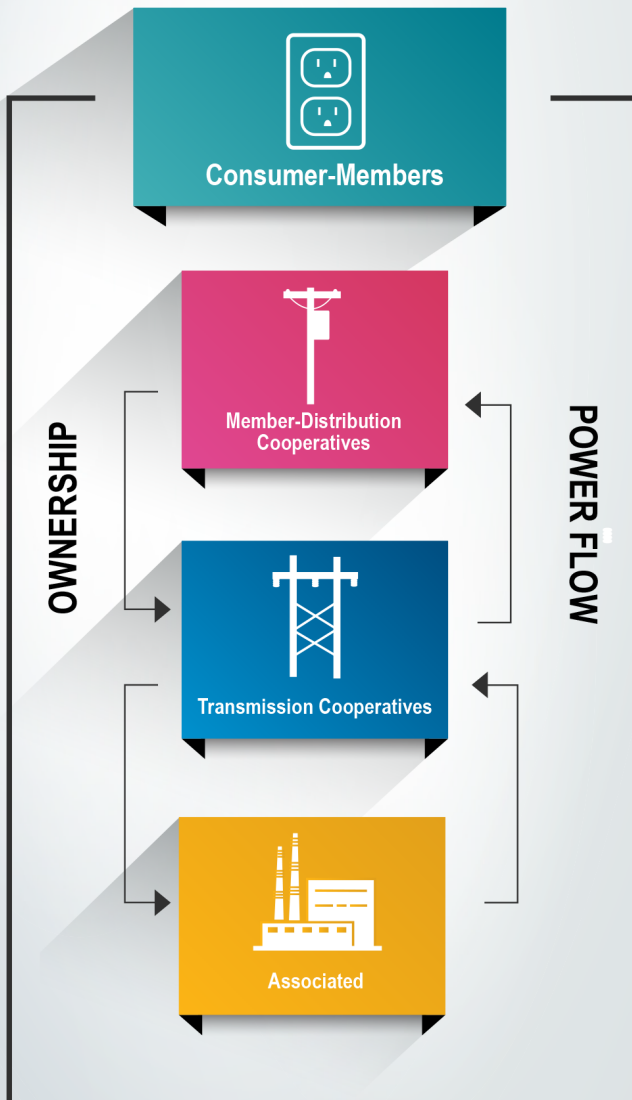
**Spend less than \$5 to save at least \$5 per year.**

Drafts can come from leaky windows and doors, but air can also sneak in and out around light fixtures, switches, and electrical outlets. Installing foam gaskets behind outlets and switch plates is a quick, easy, and inexpensive way to reduce air leaks.

**MORE WAYS TO SAVE > [www.touchstoneenergy.com](http://www.touchstoneenergy.com)**

# The people behind your power

**Associated Electric Cooperative generates the energy that powers your life**



## Member - Owned Member - Focused

Powering homes, farms and businesses in rural northeast Oklahoma is a point of pride for Associated Electric Cooperative, the generation and transmission cooperative located in Springfield, Missouri. If you are a member of Lake Region Electric Cooperative your electricity comes from Associated's power plants. This cooperative is owned by members like you and serves 2.1 million people. It's controlled through three tiers, your distribution cooperative (LREC), its transmission cooperative (KAMO) and a board including representatives from each level.

"Associated generates power for electric cooperatives in our system with values learned from our member-owners," says Emery "Buster" Geisendorfer, member-elected president of Associated's board of directors. "We know they want reliable, affordable power generated in a responsible way. That's how we view the power we generate — it must meet that reliable, affordable and responsible test."

A Lewis County Rural Electric Cooperative member, Buster is a cattleman from Monticello, Missouri. He serves on his local board and is president of Northeast Missouri Electric Power Cooperative, a regional transmission co-op. He says the three-tiered system — distribution, transmission and generation — is a key difference in why and how Associated generates power.

"I'm a member, too," Buster says. "Those who serve our member-owners at every level of the three-tiered system are focused on members."

### 1 Power when you need it

Providing reliable power expected by members requires different types of generation. Associated's fleet producing electricity generated by natural gas, coal, wind and hydropower is diverse enough to provide power on the hottest, coldest, driest, windiest and calmest days. Natural gas and coal are



---

**“We know they want reliable, affordable power generated in a responsible way. That’s how we view the power we generate — it must meet that reliable, affordable and responsible test.”**

*- Emery “Buster” Geisendorfer*

---

the most reliable forms of generation because they operate around the clock. They can be controlled unlike power sources that use available wind, sunshine or water to operate. There also are adequate supplies of natural gas and coal, including a 45- to 60-day coal stockpile on site.

## **2** Power at a fair price

Electricity is provided to members 24 hours a day, 7 days a week, 365 days a year. As members ramp up their use, Associated’s goal is to ensure reliability, then match members’ needs to the most affordable generation resource.

Coal generation supplied about half of members’ electricity in 2019. Low prices for natural gas have increased the use of this fuel source in Associated’s energy mix, which benefits members. Coal and natural gas are typically less expensive for generation than wind or other renewable sources. Hydropower, the lowest-cost source, is used as much as possible, but is limited in supply by rainfall and is controlled by the U.S Army Corps of Engineers.

## **3** Power generated the right way

A focus on members drives Associated to be responsible caretakers of the natural environment. To balance reliable and affordable electricity with environmental responsibility is not easy or inexpensive, but Associated is committed to generating power the right way. Associated and its members have spent more than \$1.1 billion to reduce air emissions since 1994, resulting in more than 70% improvement in air quality. By adding significant amounts of wind power to diversify generating sources, investing in environmental controls and staying up to date with regulations and technologies, Associated complies with environmental regulations at the lowest cost possible for members.

“Having actual end users of its electricity sit on its board of directors makes Associated unique among other generators,” says Buster. “Balancing reliable and affordable electricity with environmental responsibility takes a steadfast commitment and an allocation of resources. It’s a priority Associated takes seriously. Their experience assures Associated meets the needs of its member owners. I can’t imagine a better way to run a business that puts service first.”



The Thomas Hill Energy Center is one source of affordable, reliable electricity generated by Associated Electric Cooperative.



Hearing every crystal-clear word on the conference call

Uploading final project files to the cloud

Video chatting with your kids

Streaming just one more episode of 'NCIS' after a full day

Ordering the highest-rated headphones from Amazon

Leaving your favorite new coffee shop a 5-star review

# HOW DO YOU CONNECT?

We all use the internet differently, whether it's for work, entertainment, or just making our lives easier. No matter how you use the internet, you need a connection that's **FAST** and **RELIABLE**.

**Fast Internet | Simple TV | Reliable Home Phone**

**register.lrecok.net / 918-772-2526 / **

*\* Live service not available in all areas. Must pre-register for service. 24/mo residential contract is required for free construction & installation. \$10/mo optional Wifi router fee. Other terms may apply.*



### Your Board of Trustees

Scott Manes.....President  
 Lynn Lamons.....Vice-President  
 Randall Shankle.....Secretary-Treasurer  
 Jack Teague.....Asst. Secretary-Treasurer  
 James Walls ..... Trustee  
 Gary Cooper .....Trustee  
 Dianna Mayfield.....Trustee

### Staff

Hamid Vahdatipour .....CEO  
 Ben McCollum .....Director of Finance  
 Logan Pleasant.....Director of Operations  
 Glen Clark .....Director of Marketing  
 Larry Mattes.....Communications  
 Tina Glory-Jordan .....Attorney

### Office Hours

Monday-Friday  
 8:00 a.m. - 4:30 p.m.

### Telephone

**800-364-LREC or  
 918-772-2526**

### Website:

[www.lrecok.coop](http://www.lrecok.coop)  
[www.lrecok.net](http://www.lrecok.net)

### Locations

Hulbert, Wagoner &  
 Tahlequah, OK.

### Main Office Address

P.O. Box 127  
 Hulbert, OK 74441

### Hidden Account Number

Look for your account number hidden in this issue of the *Powerline Press*. If you find your number, Lake Region Electric will credit your next bill. To claim your credit, notify LREC's Hulbert office by phone during the month of publication.

The amount increases by \$10 with each issue your prize goes unclaimed to a maximum of \$50.

**Cooperative bylaws** are available upon request at Lake Region Electric Cooperative's office in Hulbert.

